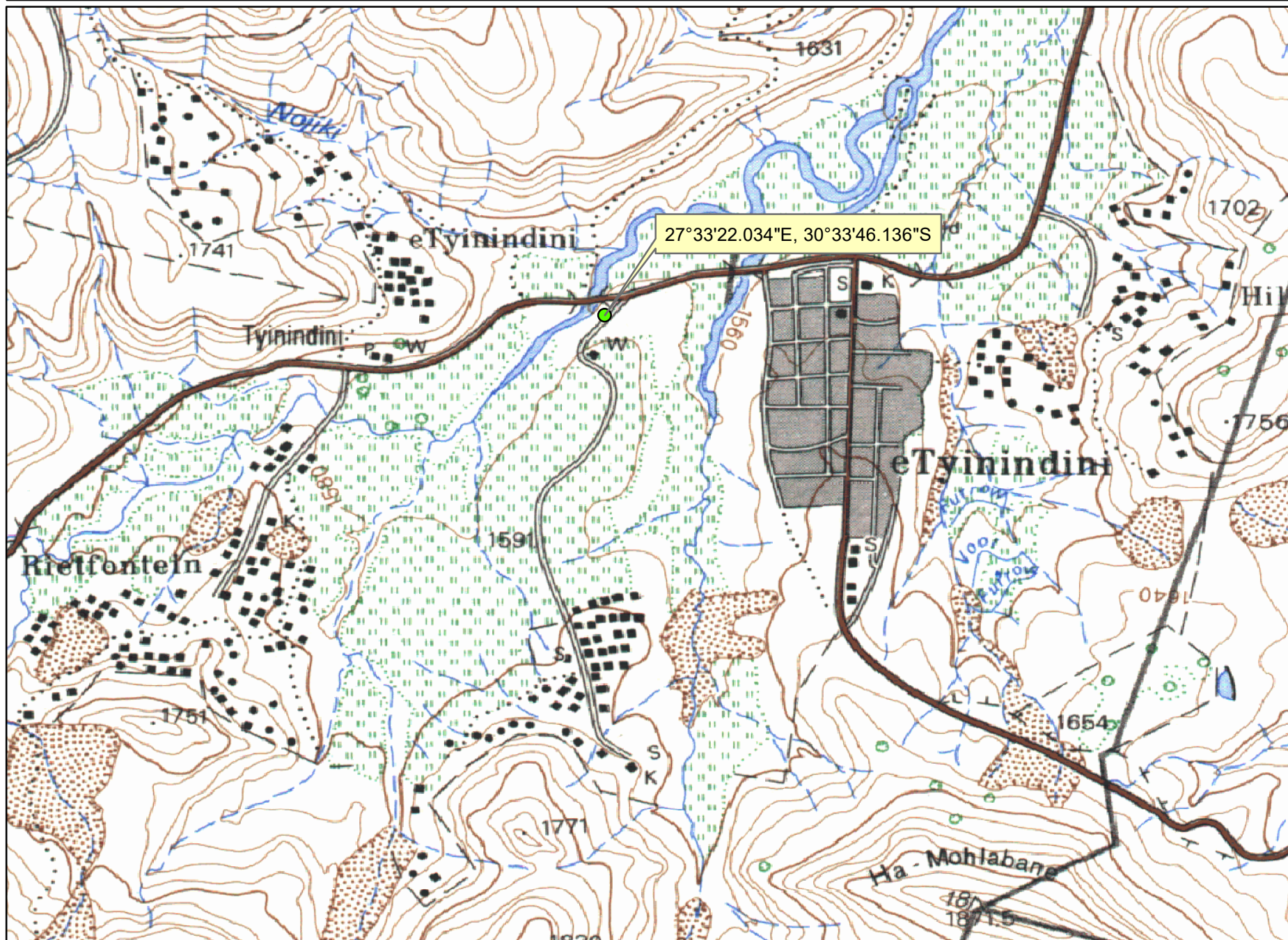


Masakhane project



SENQU LOCAL MUNICIPALITY



Legend

● Masakhane project

Scale 1: 1 000



Prepared By : Hashibisi S
Land Use Management-GIS
Joe Gqabi District
Coordinates: 30° 33' 46.136"S , 27° 33' 22.034"E
Date: March 2021

Limits of liability and warranty
Disclaimer The Department of
Rural Development and Agrarian
Reform, makes no warranty of
any kind expressed or implied
with regard to the data illustrated
and shall not be liable in any
event for any incident or
consequential damages

