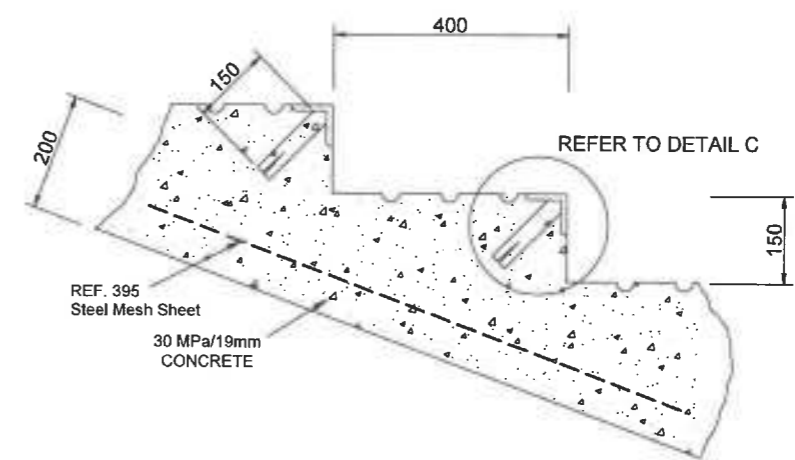
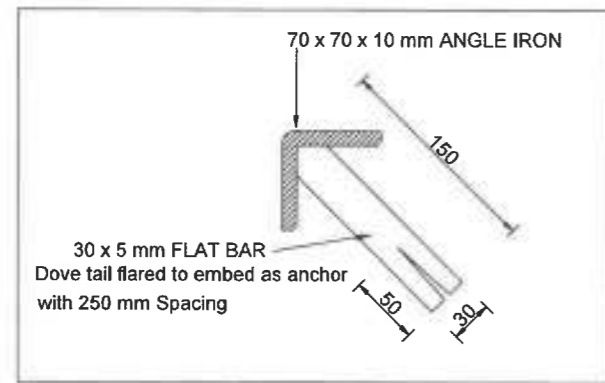


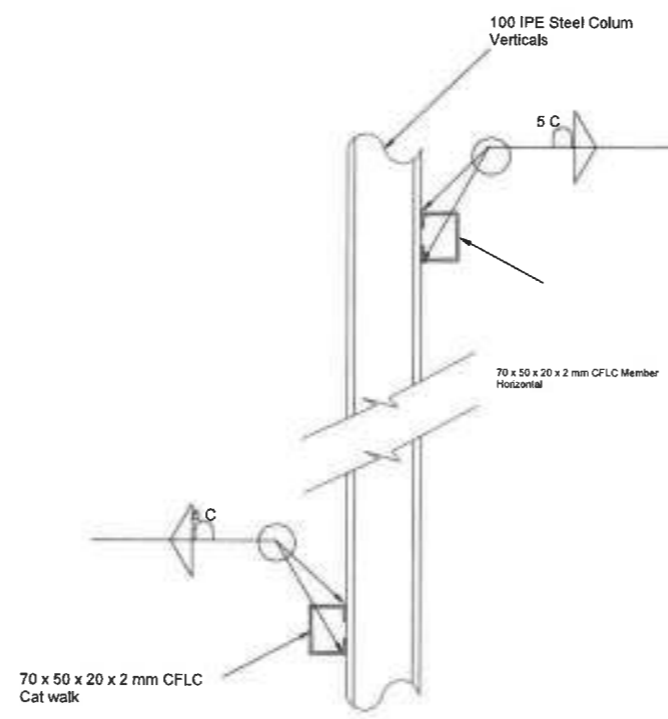
DETAIL A (ENTRY STEPS SECTION)  
NOT TO SCALE



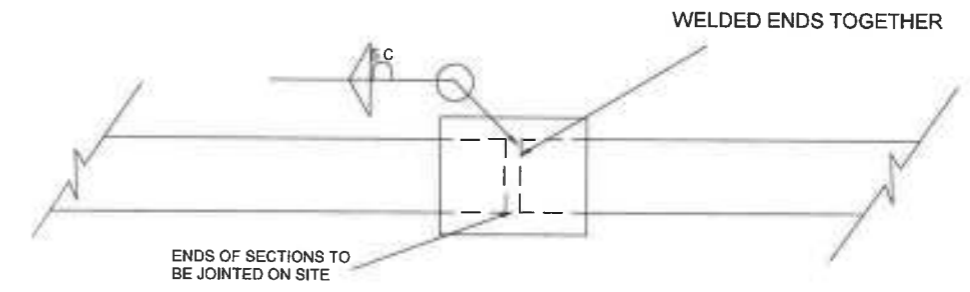
DETAIL B (EXIT STEPS SECTION)  
NOT TO SCALE



DETAIL C  
NOT TO SCALE



WELDING DETAIL  
NOT TO SCALE



JOINT DETAIL  
HORIZONTAL MEMBERS  
DETAIL D  
NOT TO SCALE

NO:	SPECIAL NOTES:
1.	The office must be notified for inspections at the following stages: - After excavation of the plunge dip; before concrete is placed. - After placing of the formwork. - Before any welding is started on site.
2.	All hor. CFLC welded to vert. IPE-sections according to SANS specifications.
3.	Grouted stone pitching: 1 cement, 2 washed river sand, 100-150mm stone.

JPJ KOCH  
(CHIEF ENGINEER)  
  
DECEMBER 2020  
(DATE APPROVED)

**RURAL DEVELOPMENT AND AGRARIAN REFORM  
PROVINCE OF THE EASTERN CAPE**  
  
ENGINEERING  
SERVICES  
Private Bag X015  
DÖHNE ADI  
STUTTERHEIM  
4930

**CATTLE PLUNGE DIPPING TANK  
(STEEL)**  
  
DETAIL 1

SCALE  
NTS  
  
A3 ORIGINAL

INDEX NO.:  
SCMM001/22/04  
  
PLAN NO.:  
SHEET 4 OF 8